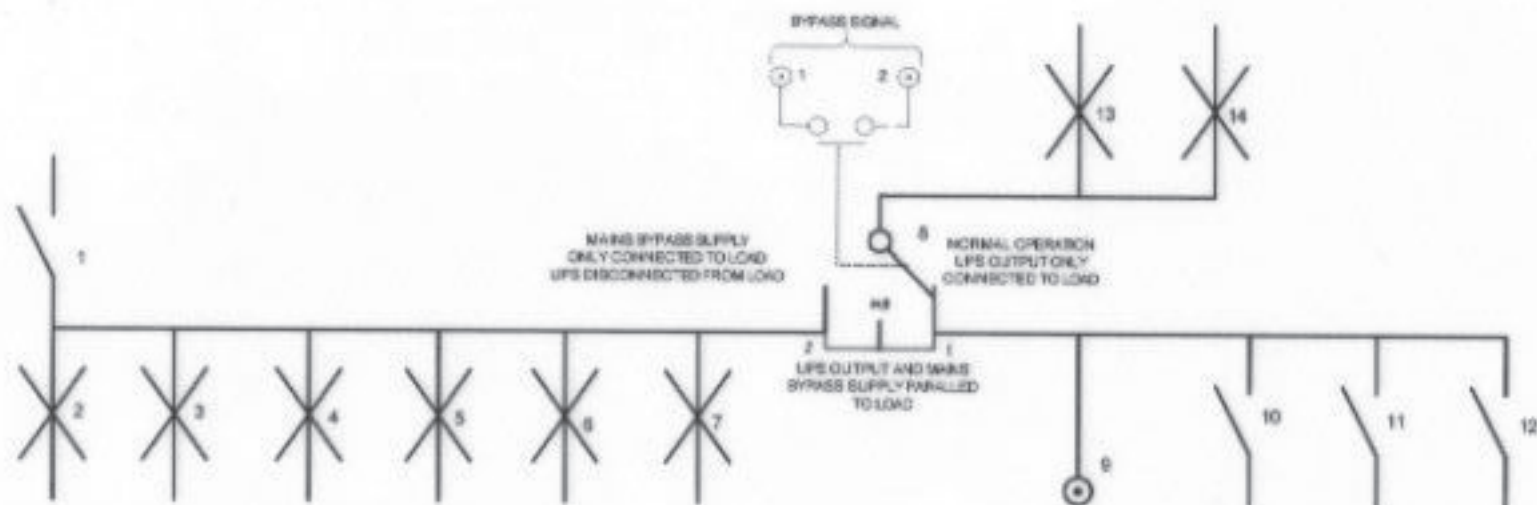


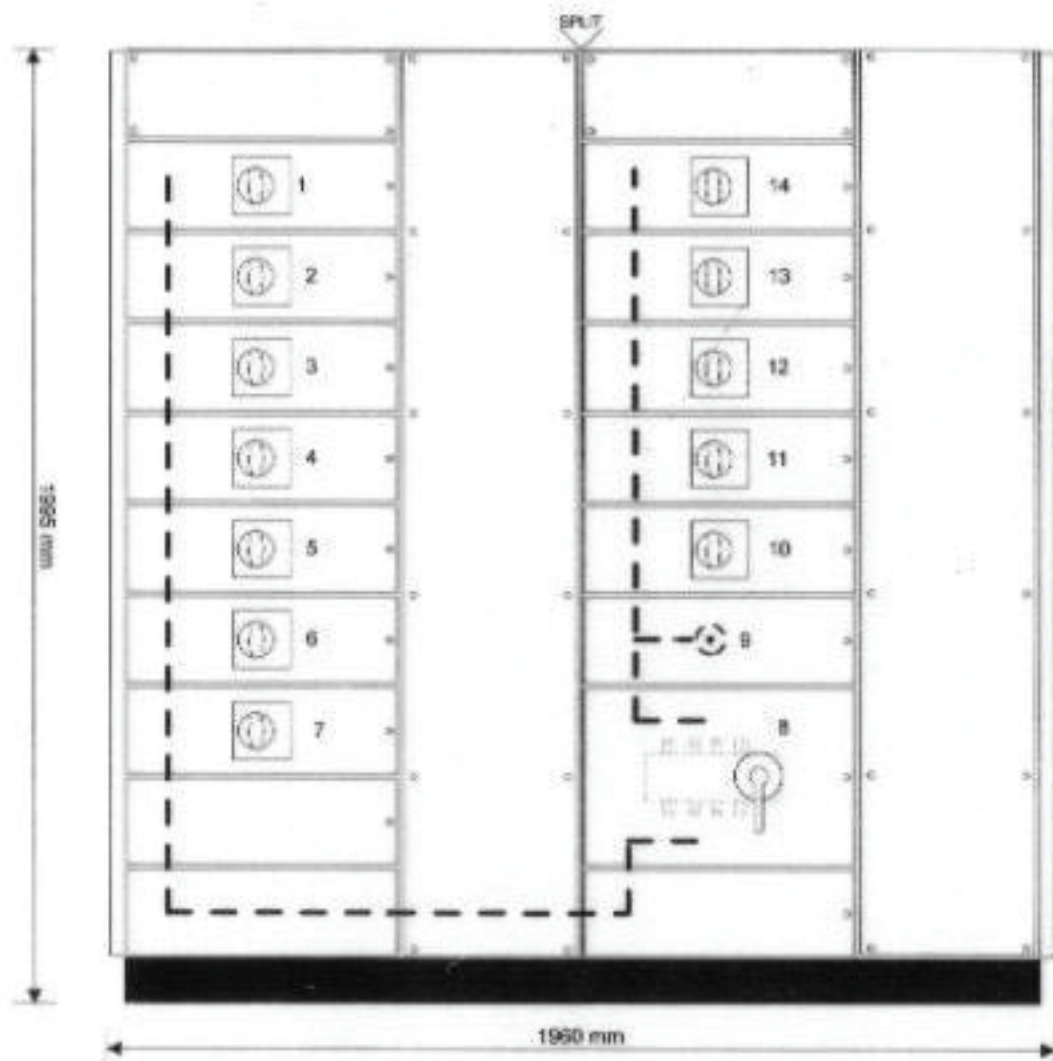
1. 250A N/A TP & N/LINK MCCB(MAINS SWITCH)
2. 100A TP MCCB(UPS 1 RECTIFIER)
3. 100A TP MCCB(UPS 2 RECTIFIER)
4. 100A TP MCCB(UPS 3 RECTIFIER)
5. 100A TP & N/LINK MCCB(UPS 1 BYPASS)
6. 100A TP & N/LINK MCCB(UPS 2 BYPASS)
7. 100A TP & N/LINK MCCB(UPS 3 BYPASS)
8. 250A 4 POLE 3 POSITION MAINTENANCE BYPASS SWITCH C/W EARLY MAKE AUXILIARY CONTACTS(OVERALL MAINTENANCE BYPASS)
9. LOADBANK TERMINALS
10. 100A N/A 4 POLE MCCB(UPS 1 OUTPUT)
11. 100A N/A 4 POLE MCCB(UPS 2 OUTPUT)
12. 100A N/A 4 POLE MCCB(UPS 3 OUTPUT)
13. 200A TP & N/LINK MCCB(LOAD)
14. 100A TP & N/LINK MCCB(LOAD)

NOTE

A MAIN EARTH BAR AND SCREW FIXED LABELS FITTED AS STANDARD



WORKS ORDER NO.	9655
DELIVERY DATE	10C 13/12/94
CABLING ACCESS	FRONT
INCOMING CABLES	TOP/BOT
OUTGOING CABLES	TOP/BOT
BUSBAR RATING	630A
NEUTRAL RATING	630A
I.P. RATING	31
DEPTH	630mm
PAIN T FINISH	GREY RAL 7032
MANF. TO BS 5486 PART 1, 1996	FORM 4 TYPE 2



DELIVERY DATE
CABLING ACCESS
INCOMING CABLES
OUTGOING CABLES
BUSBAR RATING
NEUTRAL RATING
I.P. RATING
DEPTH
PAINT FINISH
MANF. TO BS 5486 PART 1. 1986

1. 250A N/A TP & NLINK MCCB(MAINS SWITCH)
2. 100A TP MCCB(UPS 1 RECTIFIER)
3. 100A TP MCCB(UPS 2 RECTIFIER)
4. 100A TP MCCB(UPS 3 RECTIFIER)
5. 100A TP & NLINK MCCB(UPS 1 BYPASS)
6. 100A TP & NLINK MCCB(UPS 2 BYPASS)
7. 100A TP & NLINK MCCB(UPS 3 BYPASS)
8. 250A 4 POLE 3 POSITION MAINTENANCE BYPASS SWITCH C/W E MAKE AUXILIARY CONTACTS(OVERALL MAINTENANCE BYPASS)
9. LOADBANK TERMINALS
10. 100A N/A 4 POLE MCCB(UPS 1 OUTPUT)
11. 100A N/A 4 POLE MCCB(UPS 2 OUTPUT)
12. 100A N/A 4 POLE MCCB(UPS 3 OUTPUT)
13. 200A TP & NLINK MCCB(LOAD)
14. 100A TP & NLINK MCCB(LOAD)

NOTE

A MAIN EARTH BAR AND SCREW FIXED LABELS FITTED AS STAN